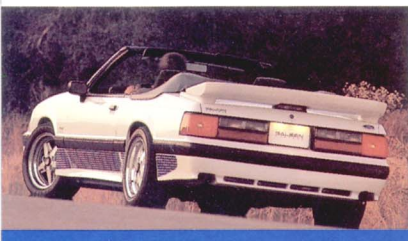


SALEEN MUSTANG

POWER IN THE HANDS OF A FEW

THE LIMITED EDITION SALEEN MUSTANG. WHEN YOU GET SERIOUS ABOUT PERFORMANCE.

The 1989 Limited Edition Saleen Mustang is a unique blend of purposeful styling, advanced suspension develop-



ment and race-proven drivetrain. Its competition-derived urethane front spoiler,

side skirts, rear valance and rear wing complement both appearance and handling. Shorter, firmer springs plus specially valved Monroe Formula GP gas shock absorbers provide the sure feeling of a race car. Urethane pivot bushings and stress point chassis bracing enhance structural integrity. Big Ford SVO 4-wheel disc brakes and five-bolt hubs supply sure stopping power. Saleen/American Racing alloy wheels, 16" x 7" fronts and 16" x 8" rears, with P225/50 VR16 General XP2000V tires provide a wide stance and high adhesion footprint.

The high output OHV fuel-injected 302ci Ford V8 delivers

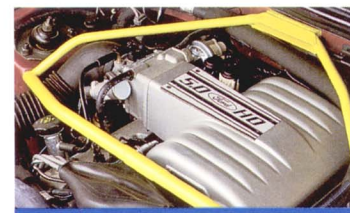


power, torque and Ford Factory Warranty-backed reliability. A Borg-Warner T-5 five speed handle this horsepower and get it to the road with tremendous response through each close-ratioed gear change.

Aerodynamics, handling, stopping, horsepower — all the performance ingredients are



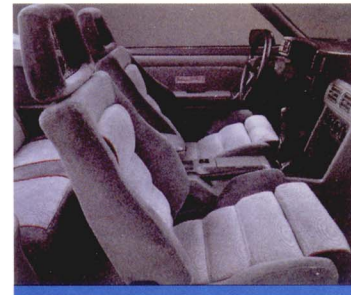
there in the new Saleen Mustang. Integrated and balanced to create a very special vehicle of true racing capability. And inside this remarkable machine the quality continues. Saleen edition FloFit sport seats with their body molded contours and lumbar adjustment support



and fit you perfectly. The three-spoke leather covered Momo steering wheel reflects its racing

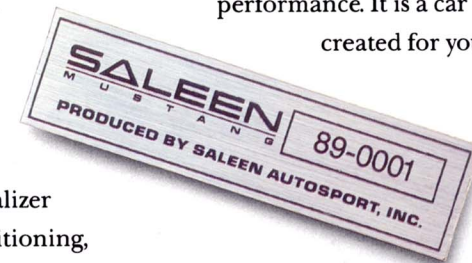
heritage in optimum size and grip. A 170MPH speedometer and quick reading tachometer, both Saleen-designed, are right where you want them for instant input. The leather covered shift knob, the pedal positions, the driver's foot rest — clearly, this is a car to be driven.

The Saleen Mustang is also a car to be driven with all the comfort and sensual pleasure befitting a refined touring automobile. Concert hall sound surrounds you through the enclosure-engineered magic of a Pioneer KEH 8050 4-channel, 6-speaker, 80 watt stereo cassette system with graphic equalizer and remote. Air-conditioning,



cruise control, power windows, remote controlled mirrors — all the amenities you'd expect in a car of this caliber are there and waiting for you.

The 1989 Saleen Mustang is a car created for the knowing enthusiast who is serious about performance. It is a car created for you!



GENERAL			
Curb Weight, lb.		2782	
Weight Distribution (w/Driver), F/R		59/41	
Fuel Capacity, Gal.		15.8	
Wheelbase, In.		101	
Width	69.1	Height	50.0

ENGINE	
Type	HO, OHV 90-Degree V8
Bore & Stroke	4.00x3.00-inch
Displacement	5.0L, 302-cid
Compression Ratio	9.5:1

Induction System	Sequential Electronic Fuel-Injection
Exhaust System	Stainless Steel Tubular Headers with Dual Exhaust 2 ¼ -in. Pipes, Dual Low-Restriction Mufflers

Camshaft	Hydraulic Roller Tappet Design
Horsepower	225 @ 4000 rpm
Torque	300 @ 3200 rpm

DRIVETRAIN	
Transmission	5-SPD Manual, Borg Warner T5
Final Drive Ratio	3.08

SUSPENSION
 Front Hybrid MacPherson Strut with Monroe Formula GP Gas Inserts and specific rate Springs on Lower Control Arms, 1.31-inch Stabilizer Bar with Urethane Pivot Bushings and Strut Tower Brace. Calibrated suspension setting.

Rear Four Bar Link with specific rate Coil Springs on Lower Arms, 830 Stabilizer Bar, Quadra Shock system with vertical Monroe Formula GP Gas shocks and Monroe Horizontal Axle Dampers.

Wheels SALEEN/AMERICAN RACING design alloy 16" x 7" / 16" x 8"

Tires General XP2000V P225/50 VR-16

PERFORMANCE	
0-60	6.0 seconds
Quarter-Mile	14.50 @ 95 MPH
Max. Lateral Acceleration	0.88G
Braking From 60-0/145 Ft.; 90-0/36 Ft.	
Top Speed	149 MPH

RACECRAFT SUSPENSION	
Specific Rate Front and Rear Coil Springs	
Monroe Formula GP Gas Front Struts	
Special Strut Mounting Bearings	
Monroe Formula GP Gas Rear Shocks	
Monroe Horizontal Axle Damper	
Urethane Sway Bar Pivot Bushing	
SALEEN/AMERICAN RACING Design Alloy Wheels 16" x 7" Front, 16" x 8" Rear	
General XP2000V Tires, P225/50 VR16	

High Performance Alignment & Tuned Chassis

PERFORMANCE ENHANCEMENTS	
Four Wheel SVO Type Disc Brakes	
Strut Tower Brace, Racecraft Chassis Bracing	
Heavy Duty Cooling System (opt.)	
Panhard Rod (opt.)	

5 Lug Bolt Pattern	
Straight Dual Exhaust Pipes	
Hurst Quick Ratio Shifter	
3.27; 3.55 Traction LOC Differential (opt.)	

AERODYNAMICS	
Saleen AutoSport Competition Design Rear Wing	

Saleen AutoSport Edition Front Air Dam and Side Skirts (Urethane)

Saleen AutoSport Edition Ground Effects Rear Valance (Urethane)

STYLING AND INTERIOR	
170 MPH Saleen Speedometer	
Electronic Saleen Tachometer	
Cruise Control	
Leather covered Shift Knob	
3 Spoke Leather Covered MOMO Steering Wheel	

Pioneer Cassette/Radio with 6 Speakers, 80 Watts, 4 Channels, with Remote

Pioneer Graphic Equalizer
 Saleen Edition FloFit Sport Seats, with Lumbar Support

Matching Rear Seat & Door Panels
 Left Side Driver's Foot Rest

Saleen Mustang Windshield Graphic
 Saleen Mustang Deck Lid Graphic
 Saleen Mustang Racing Stripes
 Saleen Mustang Dash Emblem

Front Bumper Moulding
 Serialization Numbers, Front
 Serialization Console Plaque, Etched Metal Finish

Serialization Engine Compartment I.D.
 Saleen Mustang Racing Jacket

EXTERIOR COLORS	
Black with Silver Graphics	
Black with Gold Graphics	
White with Blue Graphics	
White with Silver Graphics	
Bright Red with Silver Graphics	

Bright Red with Gold Graphics
 Deep Shadow Blue Metallic with Silver Graphics

INTERIOR COLORS	
Charcoal Grey	
Sand Beige	



Ultra high performance 16" alloy wheels with VR rated General radial tires (Basket Weave style optional)



Four-Wheel Disc Brakes With Five Lug Bolt Pattern

Parts and Accessories Available Individually. Please Call Saleen AutoSport High Performance Parts Division (714) 777-0464



POWER IN THE HANDS OF A FEW

SALEEN AUTOSPORT
 4955 East Hunter Ave.
 Anaheim, CA 92807
 (714) 777-1033