

1995 FORD
MUSTANG



1995 MUSTANG

Like the original pony car of 1964 that inspired it, today's Ford Mustang is unique in all the automotive world.

It's as true now as it has ever been: there's nothing else on the road quite like a Mustang.

There's a Mustang for anyone who takes the fun of driving

seriously: the well-equipped and value-packed Mustang; and the exhilarating, high-performance Mustang GT.

Enjoy Mustang driving fun in either the classic hardtop coupe or the free-spirited convertible model.

THE V-6 MUSTANG

You'll find Mustang anything but basic when it comes to

performance, with its high-torque, 3.8-litre sequential electronically fuel-injected (SEFI) V-6 and tuned suspension system.

THE V-8 MUSTANG GT

For even greater sport styling and performance, go with the Mustang GT. It's powered by a potent 5.0-litre SEFI V-8, is equipped with an agile sport-tuned handling suspension, and is outfitted with fog lamps and

rear spoiler, a leather-wrapped steering wheel and sport bucket seats.

DRIVING ENJOYMENT — AND PEACE OF MIND

Along with delivering plenty of driving enjoyment, Mustang and Mustang GT come with safety features such as dual air bags (always be sure to buckle up your seat belts) and high-strength steel door beams. Plus, over the normal warranty period, Ford's no-cost Roadside Assistance Program.

The Mustang GT coupe in Opal Frost Clearcoat Metallic. Fog lamps and rear spoiler are standard. Some equipment shown may be optional.



MUSTANG CONVERTIBLE

There was a free-spirited convertible the very first day the Mustang rolled off the assembly line back in 1964.

Today's Mustang convertible, while capturing all the fun-loving, open-air driving spirit of the original, is far and above the best ever in design and manufacturing. It's equipped with some great convenience features, too.

"IN-HOUSE" ASSEMBLY

The Mustang convertible is built as a convertible from the start.

Unlike convertibles that begin as hardtop coupes and are modified by specialist companies after production, the Mustang convertible is built with the Mustang coupe model right on the same assembly line.

And special reinforcements such as an X-brace under the engine compartment and heavier gauge steel in the rocker panels — these features, too, contribute to the convertible's structural integrity and comfort.

AND OTHER GREAT FEATURES

The "stack height" of the top when lowered is almost flush with the top of the doors, presenting a sleeker look.

To help prevent damage to the top, you can raise or lower it only when the parking brake is set.

The rear window is glass, not plastic; and a defroster is standard.

Cloth headliner is standard, as are power windows and door locks and remote-control decklid release. And an easy-to-install semi-hard boot serves as a cover for the folded top.

The Mustang convertible. There's nothing else like it under the sun.

GT

5.0-litre Mustang GT convertible in Black Clearcoat. Some equipment shown is optional.





DRIVER'S CAR

With its "dual cockpit" design, the interior of this latest generation of the Mustang recalls styling cues of the original.

But while similar in form, it departs dramatically in the way it's built around the driver.

ADVANCED ERGONOMICS

Mustang is first and foremost a driver's car, carefully designed in harmony with how you function, both mentally and physically, as the driver. With thoughtfully arranged

instrumentation and logically positioned controls. And seating that is designed for firm and supportive comfort.

For your comfort and convenience, standard are a tilt steering wheel, variable-timed interval wipers, dual electric remote-control mirrors, instrument cluster gauges including a tachometer, a multi-function floor console, and much more.

And features like dual air bags and high-strength steel

door beams provide another dimension of comfort. Peace of mind.



The clarity of gauges is standard: tachometer, voltmeter, engine temperature, fuel and oil pressure gauges.

GT

The Mustang GT interior in Black. Sport bucket seats and leather-wrapped steering wheel are standard. Some equipment shown may be optional.

MUSTANG GT

The basic idea behind the Ford Mustang GT can be expressed quite nicely in the old saying: the shortest distance between two points is a straight line.

A straightforward, no-nonsense approach to delivering a large infusion of driving excitement over a very short distance, and very quickly — this is what the Mustang GT is all about, pure and simple.

5.0-LITRE SEFI V-8 POWER

5.0 litres of high-torque V-8 muscle are transmitted to the road by way of a rear-wheel drivetrain with Ford's Traction-Lok axle. Choose the standard 5-speed manual transmission or the optional electronically controlled 4-speed automatic.

Forged steel connecting rods, double roller timing chain, tuned stainless steel tubular headers and dual exhausts are among the many proven high-performance components.

There's plenty of high-tech hardware, too, such as a sequential electronic fuel-injection system that's governed by computer control technology similar to that used in many Ford racing applications.

SPORT-PERFORMANCE HANDLING

The GT excels not only in straight-line performance but in handling as well.

The tuned sports suspension, equipped with tubular anti-sway bars and horizontally mounted rear axle dampers, is engineered to deliver directional stability and tight cornering capability.

What's more, the P225/55ZR16 tires give the GT exciting road-gripping capability to go along with its great handling precision. And for the ultimate in GT handling agility, choose the 245/45ZR17 tires — the lowest-profile design ever fitted to a Mustang.

GT

Mustang GT in Bright Blue Clearcoat Metallic. Some equipment shown may be optional.





MUSTANG



Mustang coupe in Rio Red Tinted Clearcoat. Some equipment shown is optional.

Mustang does today what the first pony car did over 30 years ago: capture the imagination with its style and performance.

MUSTANG STYLE AND POWER

There's nothing else on the road quite like Mustang, with its familiar horse emblem on the grille, long hood, short rear deck, bodyside scoops, and "dual cockpit" interior design. And matching Mustang's unique styling is excellent all-

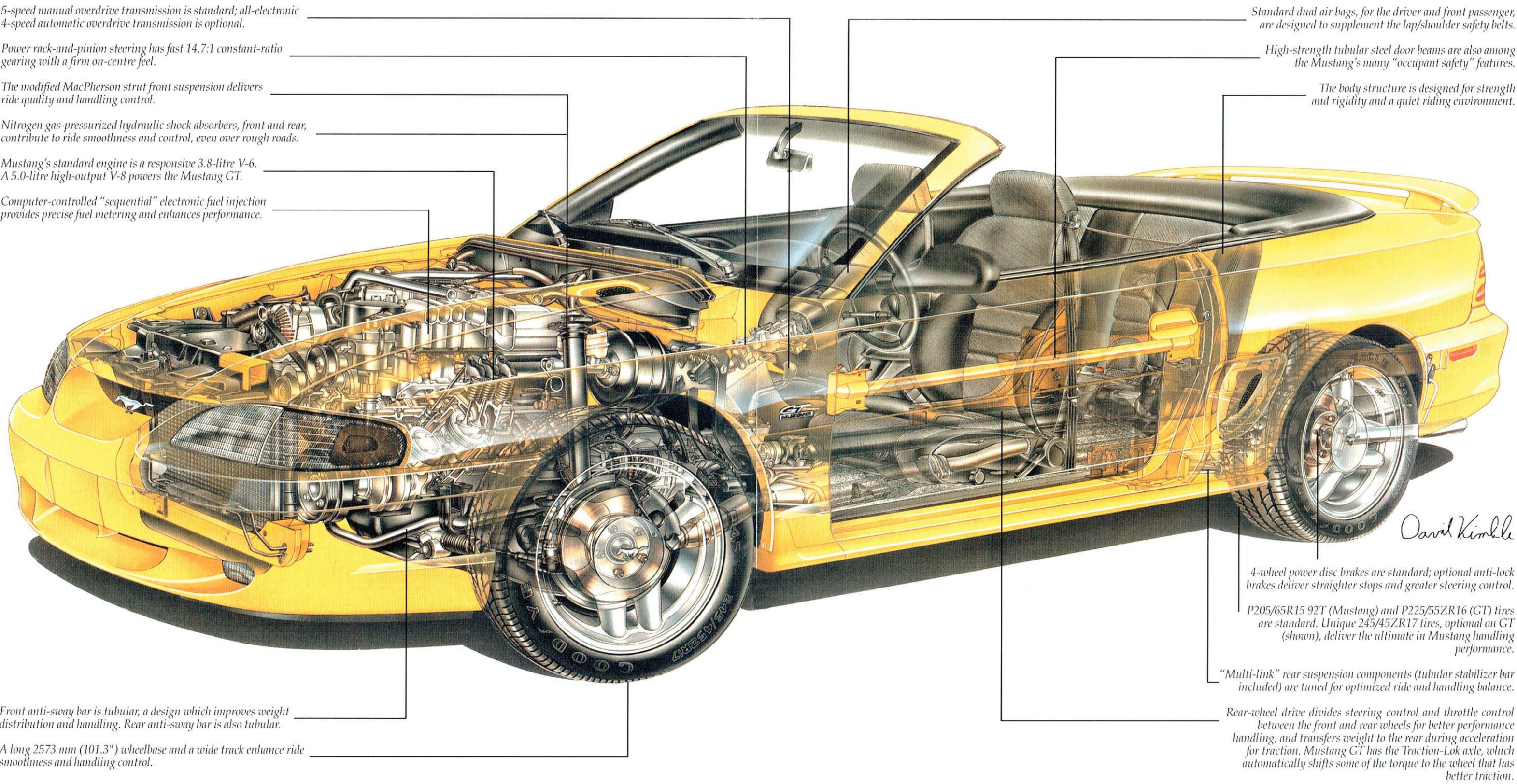
around performance.

The MacPherson strut front and multi-link rear suspensions with stabilizer bars are engineered for balanced ride quality and handling agility.

Plenty of power is supplied by a high-torque, 3.8-litre sequential electronically fuel-injected V-6 controlled by Ford's advanced EEC-V computer — a high-tech engine management system similar to that used in many Ford racing applications.

Mustang convertible in Teal Clearcoat Metallic. Some equipment shown may be optional.

MUSTANG ENGINEERING



HANDLING AND SAFETY

Ford Mustang delivers kilometre after kilometre of driving enjoyment — with suspension, steering and braking systems that provide smooth, responsive and controlled handling and stopping performance.

But while driving enjoyment is important, especially in a car like the Mustang, even more important is driving safety.

Once again, the suspension, steering and braking systems come critically into play, to help you avoid an accident.

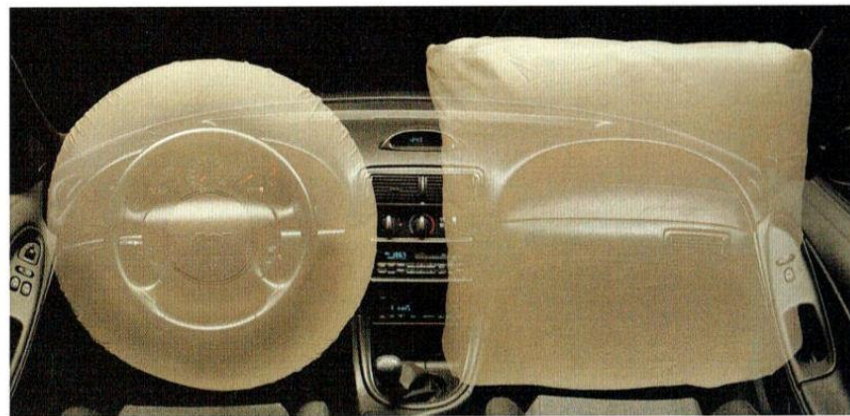
RESPONSIVE STEERING AND SUSPENSION SYSTEMS

The MacPherson-type strut front and “multi-link” rear suspensions deliver balanced ride quality and responsive handling.

For added stability, especially in a sharp cornering or lane changing maneuver, there are tubular anti-sway bars. And for increased ride quality and handling control, the struts are nitrogen gas-pressurized.

Mustang GT is also outfitted with progressive-rate coil springs, larger tubular anti-sway bars, plus horizontally mounted rear axle dampers.

Mustang's steering system is the proven rack-and-pinion design with fast 14.7:1 constant



ratio gearing and increased effort on centre for stability.

Together, the suspension and steering systems are engineered so that as you respond to road conditions, your Mustang responds quickly and precisely to you.

4-WHEEL DISC BRAKES WITH OPTIONAL ANTI-LOCK SYSTEM

To Mustang's 4-wheel disc brakes you can add the Anti-lock Brake System (ABS).

In a hard braking situation or on a slippery surface, when the brake pedal is firmly held, ABS prevents wheel lock-up by applying and releasing the brakes at a rate up to 10 times per second.

ABS helps you come to straighter stops and provides greater steering control.

Standard dual air bags, for the driver and front seat passenger, provide an added measure of protection against head and chest injuries in the event of certain frontal accidents. But please buckle up, because the air bag is designed only to supplement your lap/shoulder safety belts.



More often than not, safe driving comes down to being in control of the driving situation, whether it be an emergency braking maneuver or a routine changing of a lane. Mustang's suspension, steering and braking systems, combined with your awareness and driving skill, can help you avoid an accident when the situation arises.



DESIGNED TO PROTECT YOU IF AN ACCIDENT OCCURS

Mustang's body structure was designed with the aid of computers for rigidity and strength. The doors, for instance, have high-impact tubular steel beams. Front and rear crush zones are specially engineered to absorb impact in a controlled manner.

Mustang, in fact, either meets or exceeds current federal safety requirements. For example, federal regulations call for

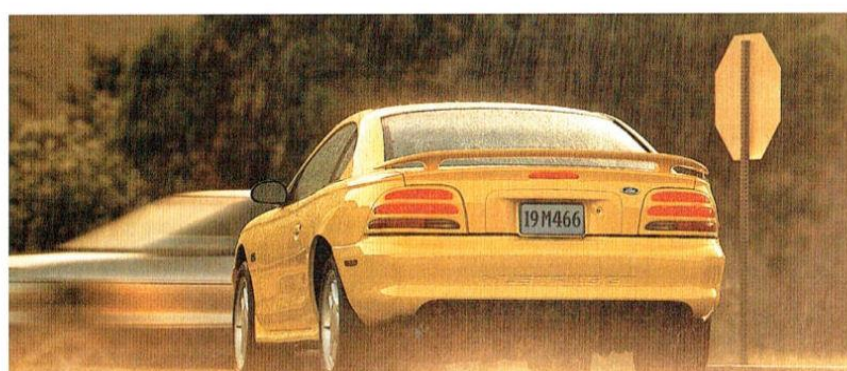
occupant protection in 48 km/h (30-mph) front or rear collisions, but Ford's standard exceeds this at 56 km/h (35 mph).

Among Mustang's many other “occupant protection” features are standard dual front air bags designed to provide added protection against head and chest injuries in certain frontal impacts.

Important as the air bag is, though, its effectiveness depends on the use of your manual safety belts. So always buckle up.

The Mustang GT features a tuned sport suspension consisting of tubular anti-sway bars, nitrogen gas-pressurized hydraulic struts, plus horizontally mounted rear axle dampers for directional stability and tight cornering capability. What's more, GT delivers excellent road-gripping capability with its P225/55ZR16 tires. For even greater handling, the GT can be equipped with 245/45ZR17 tires, the lowest profile design ever fitted to a Mustang.

Ford Mustang comes equipped with 4-wheel power disc brakes as standard equipment. A computer-controlled Anti-lock Brake System (ABS) is optional.



SOUND SYSTEMS



Ford Mustang. It's as unique in the automotive world today as the first Ford pony car was when it debuted back in 1964.

Credit goes not only to its distinctively thoroughbred sport style, its responsive power and handling. Features such as the MACH 460 Sound System option, too, put the Mustang experience in a class by itself.

MACH 460 SOUND SYSTEM

In real Mustang terms, think of the MACH 460 as 5.0 litres of V-8 power transformed into a high-powered sound system.

The MACH 460 puts out 230 watts RMS (460 watts peak power), has a 60-watt parametrically equalized amplifier for precise fine-tuning (individual equalization in coupe and convertible), two 85-watt subwoofer amplifiers, four 140 mm x 191 mm (5½"x7½") subwoofer speakers, plus four 64 mm (2½") midrange/tweeters.

The radio system features up/down scan function, AM stereo, radio play during fast forward/rewind of the cassette tape, auto seek/station set that finds the

strongest signals and memorizes them automatically.

The cassette player has auto Dolby® Noise Reduction, automatic adjustment for CrO₂, and auto scan which finds and plays the next music track.

The optional CD player features auto music search, fast-forward, compression, shuffle and scan functions; and stores the disc when the radio is being played.

MACH 460 Sound System. It takes listening pleasure to the high end of the performance band. And it's yours to enjoy only in a Ford Mustang.

NEW MINIDISC PLAYER

The new MiniDisc player is a dealer-installed option available with either the electronic radio/cassette player or the MACH 460 Sound System.

It combines the digital sound quality of compact discs with the portability and recordability of cassettes. And even though it's just 1/3 the size of a CD, the MiniDisc holds the same amount of digital audio—up to 74 minutes.

Among the MiniDisc's features is a 12-character display that shows the disc and track titles of pre-recorded discs.

"In the car audio industry, the new Mustang is a milestone. The first application of factory MiniDisc technology supported by the superb MACH 460 system is a tough combination to beat."

— PETERSEN'S AUTOTRONICS

The new dealer-installed MiniDisc player features the digital sound quality of compact discs plus the portability and recordability of cassettes.



The optional high-performance MACH 460 electronic AM/FM stereo sound system with cassette tape player is available with an optional compact disc player.



An electronic AM/FM stereo radio with four speakers and 24 watts is standard. The cassette tape player (shown above) is included in Preferred Equipment Packages.

STANDARD EQUIPMENT

Mustang is a great all-around performer. But there's much more to performance than just power and handling.

Consider also Mustang's other fine comfort, convenience and safety features.

These, too, contribute to Mustang's highly rewarding driving experience.

PHYSICAL COMFORT

Comfort was foremost in the minds of Ford designers when they crafted the interior of this latest

generation of the Ford Mustang.

The seating is designed to be firm and supportive and to minimize fatigue, especially over long trips.

Instruments and controls are carefully designed and logically arranged to make them easy to use.

And every Mustang model comes well equipped with an impressive list of convenience features, a few of which are shown here.

PEACE OF MIND

Mustang provides not only for your comfort and convenience.

Dual air bags, high-strength steel door beams, front and rear crush zones — these are but a few of the many ways Mustang provides for your safety.

Because just as important as your physical comfort is your peace of mind.



(A) A 12-volt auxiliary outlet for operating small electrical accessories is one of the new Mustang's many conveniences.



(B) Mustang comes with a tilt steering wheel for individualized comfort (leather-wrapped wheel shown is standard only with GT).



(C) Fold down either one or both of the rear seat backs if you're carrying long items (coupe only). A versatile feature.



(D) The full centre floor console includes an armrest, storage bin, cupholder, plus storage for compact discs and cassette tapes.

MAJOR MUSTANG STANDARD FEATURES

EXTERIOR	Mustang	GT
Aerodynamic halogen headlamps	•	•
Flow-through hood and side quarter scoops	•	•
Dual electric remote-control mirrors (convex right-hand mirror)	•	•
Convertible top with semi-hard boot, power retractable (convertible)	•	•
15" wheel covers	•	•
16" 5-spoke cast aluminum wheels with locking lug nuts	•	•
Fog lamps	•	•
Single-wing rear spoiler	•	•
INTERIOR		
Driver and front passenger air bag supplemental restraint systems	•	•
3-point lap/shoulder safety restraints	•	•
Reclining cloth front bucket seats with cloth head restraints	•	•
GT cloth front bucket seats with cloth 4-way head restraints, adjustable cushion/lateral supports and power lumbar supports	•	•
Leather-wrapped steering wheel	•	•
Tilt steering wheel	•	•
Driver's footrest	•	•
454 g (16-oz.) carpeting	•	•
Integrated wraparound instrument panel and door trim design with side window demisters	•	•
Digital clock on centre of dash panel	•	•
Centre floor console with armrest, storage bin, cupholder and CD/cassette storage	•	•
Gauges: tachometer, voltmeter, engine temperature, fuel and oil pressure	•	•
Steering column-mounted controls for turn signals, wipers/washer, high beams, and flash-to-pass feature	•	•
Interval windshield wipers	•	•
Power door locks, windows and decklid release (convertible only)	•	•
Auxiliary power outlet for small accessories	•	•
Courtesy lamps: dome with side door switches (dome lamp integrated with rearview mirror in convertible), engine compartment, glove box, front ashtray, and luggage compartment	•	•
Visor vanity mirrors with covers (illuminated in convertible and GT)	•	•
Split/fold-down rear seat backs (coupe)	•	•
Fixed rear seat back (convertible)	•	•
Tinted glass — complete	•	•
Electronic AM/FM stereo radio with four speakers and 24 watts	•	•

OPTIONS AVAILABILITY

Options shown or described are available at extra cost and may be offered only in combination with other options or subject to additional ordering requirements or limitations.

Standard Mustang cloth reclining front buckets with full centre console in Opal Grey, one of five available colours.

PAINT & TRIM COLOURS, PREFERRED EQUIPMENT PACKAGES & OPTIONS

PAINT AND TRIM COLOURS

Exterior Paint Colours

	Interior Trim Colours				
	Bright Red	Saddle	Opal Grey	Black	White*
Canary Yellow Clearcoat**			•	•	•
Sapphire Blue Clearcoat Metallic**			•	•	•
Rio Red Tinted Clearcoat	•		•	•	•
Laser Red Tinted Clearcoat Metallic		•	•	•	•
Vibrant Red Clearcoat		•	•	•	•
Bright Blue Clearcoat Metallic			•	•	•
Deep Forest Green Clearcoat Metallic		•	•		•
Teal Clearcoat Metallic			•	•	•
Opal Frost Clearcoat Metallic	•		•	•	•
Black Clearcoat	•	•	•	•	•
Crystal White Clearcoat	•	•	•	•	

*Convertible model only. **Exclusive Mustang GT colour. Note: the convertible top is available in White, Black, and Saddle.

PREFERRED EQUIPMENT PACKAGES AND OPTIONS

P = Package feature (content subject to change) O = Optional feature S = Standard feature — = Not Available

	Mustang		GT
	071A	075A	081A
Group 1: power side windows, door locks and decklid release (standard in convertible model and in GT)	—	P	S
Group 2: speed control; dual illuminated visor mirrors (standard in convertible model and in GT); electronic AM/FM stereo radio with cassette player and premium sound audio system; 15" cast aluminum wheels (16" cast aluminum wheels standard on GT)	—	P	P
Group 3: remote keyless/illuminated entry system and cargo net	—	P	O
Power driver's seat	O	O	P
Speed control	—	O	O
CFC-free manual-control air conditioning	P	P	P
Anti-lock brake system	O	O	P
Electronic AM/FM stereo sound system with cassette player	P	—	—
MACH 460 Sound System with cassette player	O	O	O
Compact disc player*	O	O	O
MiniDisc player (dealer installed)	—	O	O
Leather seating surfaces — sport bucket seats	—	—	O
Leather seating surfaces — sport bucket seats (convertible only)	—	O	—
Front floor mats	S	S	S
Rear window defroster	S	S	S
Bodyside mouldings	O	O	O
Electronic 4-speed automatic overdrive transmission	O	O	O
Engine block immersion heater	S	S	S
Optional axle ratio	—	—	O
15" cast aluminum wheels	O	O	—
17" cast aluminum wheels with 245/45ZR17 BSW performance tires	—	—	O

*Requires the electronic AM/FM stereo radio with cassette player and premium sound system or the MACH 460 Sound System.



Left to right: 15" wheel covers (standard on Mustang); 15" cast aluminum wheels (optional on Mustang); 16" cast aluminum wheels (standard on Mustang GT); and 17" cast aluminum wheels (optional on Mustang GT).



Canary Yellow Clearcoat (GT only)



Sapphire Blue Clearcoat Metallic (GT only)



Rio Red Tinted Clearcoat



Laser Red Tinted Clearcoat Metallic



Vibrant Red Clearcoat



Bright Blue Clearcoat Metallic



Deep Forest Green Clearcoat Metallic



Teal Clearcoat Metallic



Opal Frost Clearcoat Metallic



Black Clearcoat



Crystal White Clearcoat

SPECIFICATIONS

MUSTANG ENGINE

Type	V-6
Valves	12, OHV
Displacement	3.8L (232 cu. in.)
Bore x stroke (in.)	3.81 x 3.40
Compression ratio	9.0:1
Horsepower (SAE net)	145 @ 4,000 rpm
Torque (SAE net lbs./ft.)	215 @ 2,500 rpm
Fuel system	Sequential multi-port electronic fuel injection
Exhaust system	Single, stainless steel

MUSTANG GT ENGINE

Type	V-8
Valves	16, OHV
Displacement	5.0L High-Output (302 cu. in.)
Bore x stroke (in.)	4.0 x 3.0
Compression ratio	9.0:1
Horsepower (SAE net)	215 @ 4,200 rpm
Torque (SAE net lbs./ft.)	285 @ 3,400 rpm
Fuel system	Sequential multi-port electronic fuel injection
Exhaust system	Dual, stainless steel

TRANSMISSIONS

Type	5-speed manual overdrive (std.) Electronic 4-speed automatic overdrive (opt.)
------	--

BODY/CHASSIS

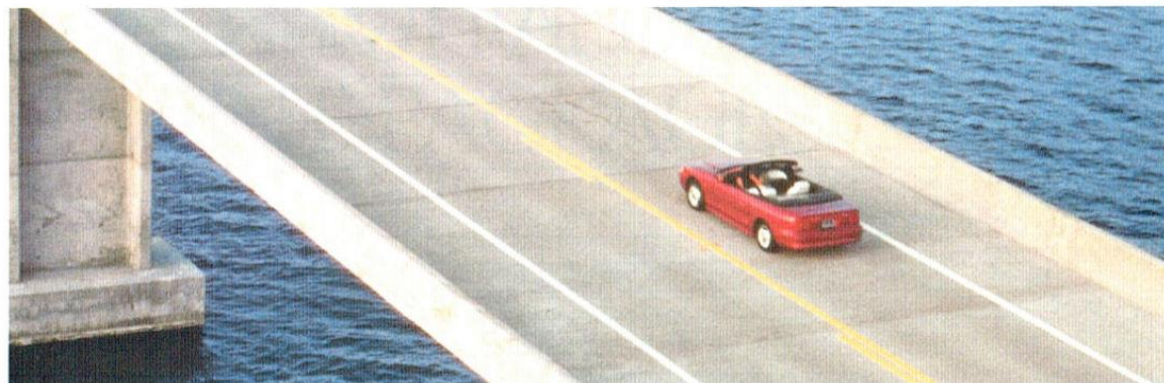
Drivetrain type	Rear-wheel drive; plus Traction-Lok axle with GT
Body type	Unitized
Front suspension	Modified MacPherson strut-type, tubular stabilizer bar, nitrogen gas-pressurized hydraulic shocks (higher-rate handling components in GT)
Rear suspension	4-bar link coil spring system, tubular stabilizer bar, nitrogen gas-pressurized hydraulic shocks (higher-rate handling components plus horizontally mounted axle dampers in GT)
Steering	Power rack-and-pinion, 14.7:1 on-centre constant ratio
Brakes	Power 4-wheel disc (std.) Anti-lock brake system (opt.)
Tires	Std. P205/65R15 92T BSW all-season (Mustang) Std. P225/55ZR16 BSW all-season (GT) Opt. 245/45ZR17 BSW (GT)
Fuel capacity	58 litres (12.8 imp. gals.)

DIMENSIONS mm (in)

	Mustang		Mustang GT	
	Coupe	Convertible	Coupe	Convertible
Wheelbase	2573 (101.3)	2573 (101.3)	2573 (101.3)	2573 (101.3)
Length	4610 (181.5)	4610 (181.5)	4610 (181.5)	4610 (181.5)
Height	1346 (53.0)	1351 (53.2)	1356 (53.4)	1354 (53.3)
Width	1984 (78.1)	1984 (78.1)	1984 (78.1)	1984 (78.1)
Front tread	1537 (60.5)	1537 (60.5)	1527 (60.1)	1527 (60.1)
Rear tread	1504 (59.2)	1504 (59.2)	1491 (58.7)	1491 (58.7)
Front head room	970 (38.2)	968 (38.1)	970 (38.2)	968 (38.1)
Rear head room	912 (35.9)	907 (35.7)	912 (35.9)	907 (35.7)
Front leg room (max.)	1080 (42.5)	1080 (42.5)	1080 (42.5)	1080 (42.5)
Rear leg room (min.)	770 (30.3)	770 (30.3)	770 (30.3)	770 (30.3)
Front shoulder room	1361 (53.6)	1361 (53.6)	1361 (53.6)	1361 (53.6)
Rear shoulder room	1323 (52.1)	1046 (41.2)	1323 (52.1)	1046 (41.2)
Trunk volume litres (cu. ft.)	309 (10.9)*	241 (8.5)	309 (10.9)*	241 (8.5)
Passenger capacity	4	4	4	4

*Rear seat backs in up position.

THE OWNERSHIP EXPERIENCE



We've gone to great lengths to make the experience of driving - and owning - a new Ford Mustang enjoyable.

We stand behind your vehicle with our 3-year/60,000 km bumper-to-bumper limited warranty. And we look after your security with our no-cost Roadside Assistance Program. You can expect nothing less from a "customer-driven" company.



The 36-month/60,000 km bumper-to-bumper limited warranty covers the complete vehicle (except tires, and other items listed in the Warranty Information booklet) against defects in factory-supplied materials or workmanship.

Ford of Canada's corrosion warranty covers against corrosion perforation on body sheet metal panels for 5 years/unlimited distance. Each vehicle is protected with the corrosion protection DuraGuard system. This system is built in at the factory to provide superior corrosion protection.

For complete warranty coverage information, see your Ford of Canada Dealer.



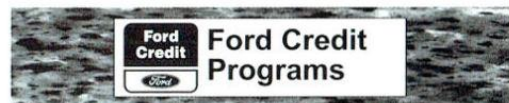
Ford of Canada extended service plans are available and cover major components on new vehicles for longer than the basic vehicle warranty.



You can count on Ford Quality now and down the road. That's because every new Ford of Canada car and light truck includes the assurance of an emergency no-cost Roadside Assistance Program during the 3-year/60,000 km bumper-to-bumper warranty period.

Help is just a toll-free phone call away - 24 hours a day anywhere in Canada or the continental United States - should you ever need trip planning, towing assistance, fuel delivery, tire change, a jump start, emergency travel reimbursement or even help when you're locked out of your vehicle.

Ask your Ford of Canada Dealer for complete details regarding this outstanding Program.



Ford Credit is a full service company that makes a wide variety of financing and leasing programs available to every qualified buyer. Offices are located across Canada. Ask your Ford of Canada Dealer for complete program details.



The Red Carpet leasing alternative is available through your Ford of Canada Dealer. This includes the popular leasing option known as "The Plan". A participating Dealer can arrange a lease term and payments tailored to your personal needs.

THE FORD COMMITMENT



Ford of Canada vehicles are built with state-of-the-art safety features. To begin with, all 1995 cars and light trucks are available with air bag supplemental restraint systems.

Each vehicle also offers the following safety features for vehicle operation and occupant protection: Shoulder and/or lap belts for all seating positions. Daytime running lights. High mount stop lamp. Two-speed or variable speed windshield wipers. Safety hood latch system. Glare-reduced instrument panel. Corrosion-resistant brake lines. Inside yieldaway rearview mirror. Impact-absorbing laminated safety-glass windshield. Inertia shut-off switch for electric fuel pumps.

Ask your Ford of Canada Dealer for complete details of Anti-Lock Braking systems (ABS), traction assist, speed-sensitive steering and our many other available safety features.



Ford of Canada encourages the use of safety belts and child/infant restraints. If a top tether is needed for a child restraint, an anchor is provided at each rear outboard seating position.



Ford of Canada is dedicated to sound environmental practices and are industry leaders in supporting a cleaner environment.

- Only CFC-free air conditioning systems are used in all 1995 Ford of Canada vehicles.
- Recycled plastic resin appears in some vehicles.
- Ford is continuing to develop alternative fuel and battery-powered vehicles.
- This catalogue is printed on recycled paper containing 10% de-inked post-consumer materials and uses vegetable inks.



\$750 CASH BACK. Recent graduates (graduating between April 1, 1993 and December 31, 1995) from a **recognized** post-secondary program may qualify for Canada's most established Graduate Rebate Program. They can get \$750 cash back, **over and above** most other consumer retail offers advertised at the time of purchase or lease. Get all the details from your local Ford or Mercury Dealer, or in your **Graduate Program Information Kit. It's free!** Just call our toll-free hotline at **1-800-387-5535**.



You can rely on Motorcraft Quality Replacement Parts to help ensure the long-term quality of your Ford of Canada vehicle. These parts meet the same high standards as those installed in production.



1-800-561-FORD. Should you require any additional general or program information, call our toll-free Customer Information Hotline for prompt, courteous assistance.



Following the publication of this catalogue, certain changes in standard equipment, options, prices or product delays may have occurred which would not be included in these pages.

Ford Motor Company of Canada, Limited, reserves the right to make these changes without incurring obligations of any kind. Your Dealer is your best source for up-to-date information.



Your Key To Saving For A Brand New Mustang.



Use CIBC Ford VISA* and Save up to \$3,500**
Use CIBC Ford Gold VISA* and Save up to \$7,000**

- Earn a 5% rebate from everyday purchases.
- Rebate earnings may be applied to the purchase or selected lease of any new Ford of Canada vehicle.
- Choose either the CIBC Ford VISA Card or the CIBC Ford Gold VISA Card.
- Rebates are in addition to any other incentives that may be in effect at the time of purchase or lease.
- Use either card to pay for residential long-distance calling with Unitel, book package holidays with Marlin Travel or rent a vehicle at participating Hertz locations

and you'll earn up to an additional 5% on top of your regular rebate.*** And there's no limit to how much extra you can earn.

- Apply now. Just call 1-800-465-CIBC (980-CIBC in Toronto), or visit your local Ford of Canada dealership or CIBC branch office.

Join the thousands of Canadians who have already applied the savings from this outstanding program towards the purchase of a new Ford of Canada vehicle.

*Your Key To Saving.*TM

*CIBC and Ford Motor Company of Canada, Limited, Licensee of Mark. **Save up to a maximum of \$700 per year or \$3,500 in total with the CIBC Ford VISA Card and up to a maximum of \$1,400 per year or \$7,000 in total with the CIBC Ford Gold VISA Card. ***Subject to change and/or cancellation without notice. Some conditions and an annual fee apply. Ask for full details of this program.

TM Trademark of CIBC